

Wireless Configuration Tips:

Sometimes it is necessary to adjust the settings on your wireless card to enable a connection, our public network is a default unsecured setup for most systems.

- **Before changing any settings, try using the wireless network. It may already work.**
- Wireless settings used at home can conflict with settings needed at the library. Please make certain that original settings can be restored before making any changes.
- After making changes, you may need to reboot.
- If using a wireless client manager, check the instructions that came with the program regarding the possibility of creating a profile to be used at the library in addition to the profiles used at home or elsewhere.

Windows XP card settings are found through the Network Connections in the Control Panel. Select Properties of Wireless Network Connection and check Internet Protocol (TCP/IP) settings.

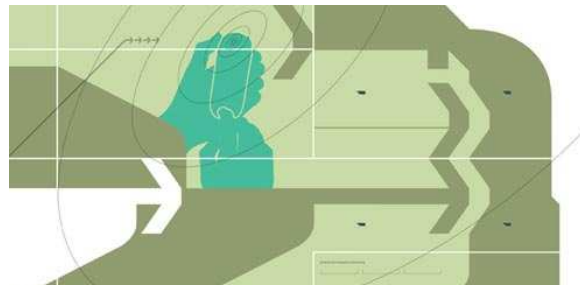
Windows 2000 settings are found through Network and Dial Up Connections in the Control Panel. Check properties of the Local Area Network associated with the wireless adapter and check properties of TCP/IP.

Windows 98/ME settings are found through the Network section in the Control Panel. Check the Properties of TCP/IP associated

with the wireless adapter.

Mac OS X settings are found through "Apple Menu>>Location>>Network Preferences".

Mac OS 9 settings are found through "Apple Menu>>Control Panels>>TCP/IP".



Wireless Card Settings needed to connect to the library's wireless network are:

- TCP/IP** settings = Use DHCP or "obtain IP Address automatically"
- DNS** settings, if applicable, should be set to "use DHCP" or "obtain automatically".
- SSID or Network Name** = Library Name or Public
- WEP or Encryption** = none or disabled
- Mode or Network Type** = Infrastructure or Access Point
- Authentication** = Open or None
- Turn Wireless ON** Many laptops with built-in wireless (and some with external cards) have switches, buttons, or software that can be used to turn wireless off to save battery life. Make sure that it is turned on.

Wireless Internet Access (WiFi)

Here at Your Local Library!



What is wireless?

- Wireless internet access allows people to bring their own portable computers to the library and get free Internet access.
- Wireless Internet access uses radio frequency signals to exchange data between your laptop computer and the Internet without the need for cables.
- The library offers free wireless access using the WiFi standard, IEEE 802.11b and 802.11g.



Security Issues:

- By their very nature, public WiFi networks are not secure.
- If security is important to you, the best way to achieve this is to connect to a VPN. Many companies offer a VPN to their employees. If you do not have access to a VPN, you may want to limit your wireless network use to non-critical e-mail and basic Internet surfing.
- Additional recommendations: use firewall and antivirus software, keep OS up to date, turn file sharing off and encrypt sensitive files.

Printing:

- Printing is not generally available while using wireless at the library.

How do I use wireless at the library?

- Users need to bring their own laptop computers to the library with either built-in WiFi or an installed wireless adapter card.
- Most WiFi or 802.11b or 802.11g compatible units should work at the library including those on Macintosh systems.
- **Due to the variety of computer systems, library staff cannot help visitors configure their own equipment. Please consult the user guide for your laptop or wireless card for hardware/software setup.**



Connection to the wireless network.

A client utility program is often the fastest and easiest way to connect.

- **Windows XP** has a built-in configuration tool. Look for the wireless icon in the system tray at the bottom, right corner. Click on it to see a list of available networks. "Public" should be on the list. Select it and click "Connect" or click "Configure" and compare settings to those listed in this brochure. Also click "Advanced" and add checkmark to the option for "connect to unsecured".
- **Windows 98/ME/2000** needs to use a wireless client manager program, provided by the manufacturer of the wireless adapter, so please refer to the documentation and software that came with the equipment.
- **MAC OS X** - Use the Airport Setup Assistant program to join existing AirPort network, signal should be detected for "Public", and follow the steps to conclusion.
- **MAC OS 9** - Use the Airport Setup Assistant program to configure an existing wireless network and "Public" should be detected. Click "Go Ahead" and then "Connect Now".